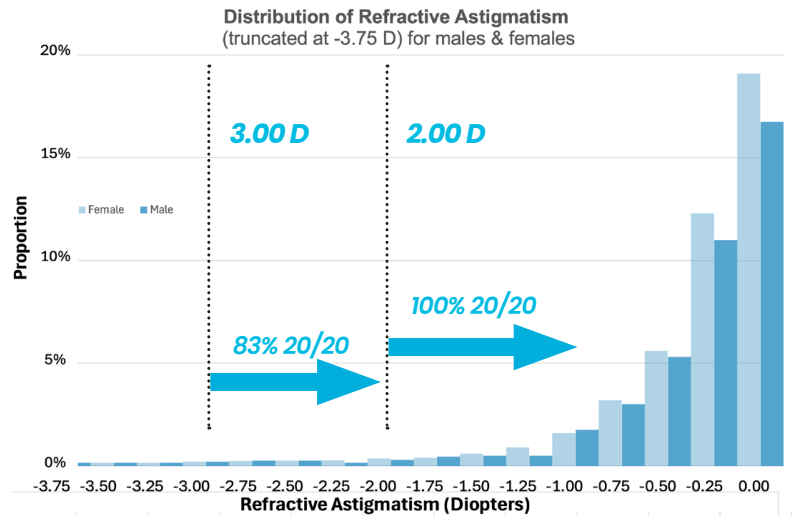


NaturalVue® Enhanced Multifocal Clinically Proven to Correct Astigmatism up to 3.00 D

A recent clinical study demonstrated that NaturalVue® Multifocal effectively corrected astigmatism:

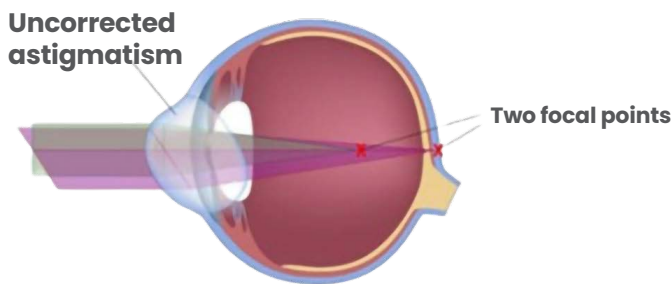
- ✓ Clinically **validated for astigmatism correction up to 3.00 D** (100% correction up to 2.00 D; 83% up to 3.00 D)
- ✓ **100% achieved 20/20 or better** binocular vision
- ✓ **77%** rated overall quality **vision as satisfactory or better**
- ✓ **83%** rated overall **comfort as satisfactory or better**
- ✓ Maintained **stereopsis and adapted to all pupil sizes**
- ✓ Suitable for **astigmatic children and presbyopes**



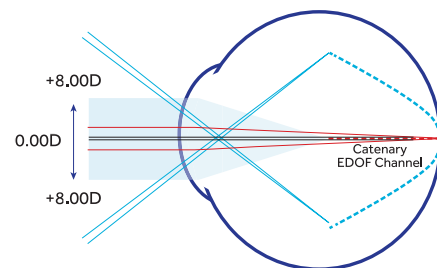
A Different Approach to Astigmatic Correction.

Unlike traditional toric lenses that only provide two focal points to correct specific astigmatic error with a specific axis, NaturalVue Multifocal corrects an extensive range of astigmatism by enabling both meridians to focus simultaneously using only its Universal ADD and Axis powers. This clinical trial validated the NaturalVue Multifocal lens's astigmatism correction indication.

Astigmatic Eye



Extended Depth of Focus Optics by VTI



Reference:

1. Carracedo, G.. Evaluation of Visual Acuity with Multifocal Catenary Curve-Based Contact Lens Design in Different Degrees of Astigmatism. Podium presentation from Global Specialty Lens Symposium; January 16, 2025; Las Vegas, NV, USA. [Click for Astigmatism Presentation](https://global.vtvision.com/wp-content/uploads/2025/01/Astigmatism-Study-GSLs.pptx) (https://global.vtvision.com/wp-content/uploads/2025/01/Astigmatism-Study-GSLs.pptx)



Scan for full details from Astigmatism presentation