



Let them see
the difference



One Lens. More Possibilities.

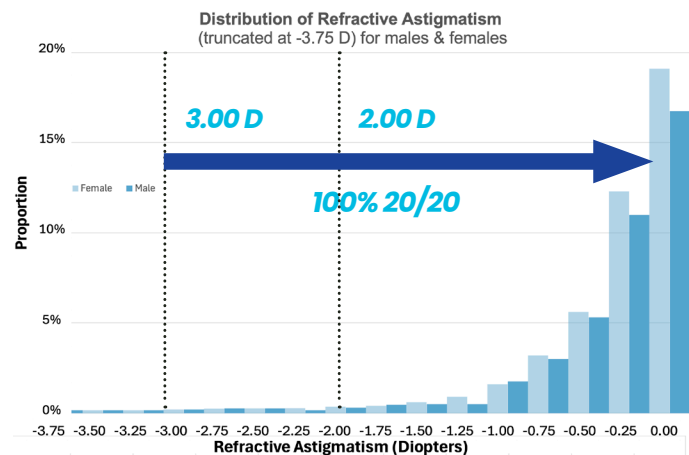
Sometimes patients are both myopic and astigmatic or presbyopic. Which demands a way to take care of multiple vision needs while also protecting their eye health. With NaturalVue® Enhanced Multifocal, you can do both easily and simply.

Let them live, work, and play without compromise – with the confidence that NaturalVue® Enhanced Multifocal is right there with them.

Clinically Proven to Correct Astigmatism up to 3.00 D¹

Updated Findings Confirm 100% Astigmatism Correction Now Through 3.00 D*

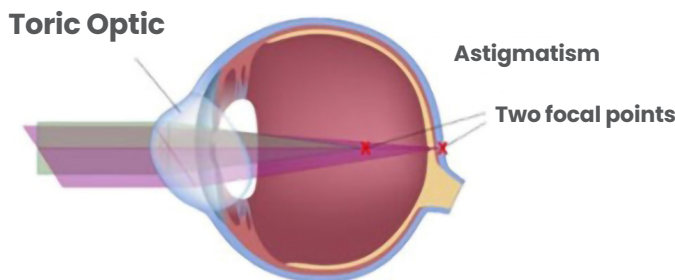
- ✓ Clinically validated for Astigmatism Correction – **Now demonstrated at 100% through 3.00 D**
- ✓ **100% achieved 20/20 or better** binocular vision
- ✓ Maintained **stereopsis and adapted to all pupil sizes**
- ✓ Suitable for **astigmatic children and presbyopes**



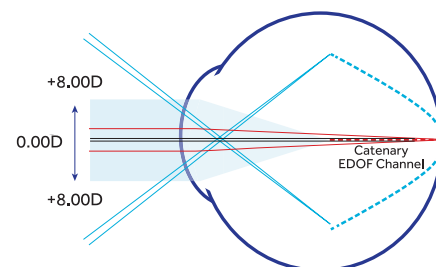
A Different Approach to Astigmatic Correction

The study found that unlike traditional toric optics, NaturalVue® Enhanced Multifocal corrects an extensive range of astigmatism by enabling both meridians to focus simultaneously, using only its Universal Astigmatism Power & Axis. This clinical trial validated the NaturalVue® Multifocal lens's astigmatism correction indication.

Traditional Toric Lenses



Extended Depth of Focus Optics by VTI



References: *When following the NaturalVue Enhanced Multifocal Fitting Guide. 1. Tuan, KM (Ashley). New Evidence Uncovered: 2-Year RCT Findings in Myopia Management, Astigmatism, and Vision Outcomes with NaturalVue, presented at American Academy of Optometry; October 10, 2025; Boston, MA, USA. Clinical study 'Evaluation of Visual Acuity with Multifocal Catenary Curve-Based Contact Lens Design in Different Degrees of Astigmatism', executed by Carracedo, G.; University Complutense of Madrid, Spain.